



GMT MONTHLY MEMBERSHIP PROGRESS REPORT

Results as of: 6/30/2018

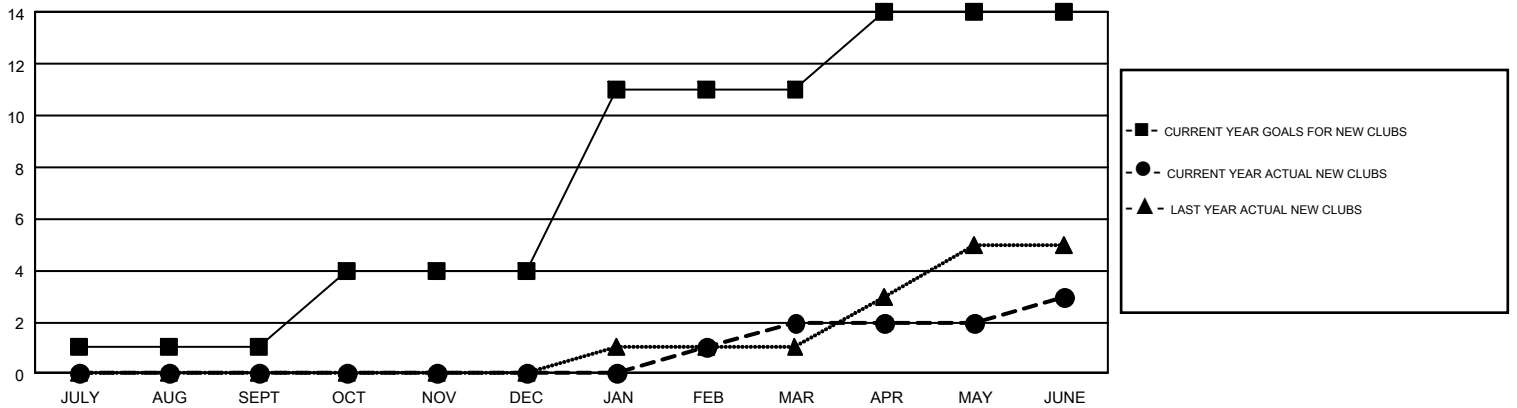
GMT Constitutional Area 2, Group A

GMT: GORDON ZIEGLER

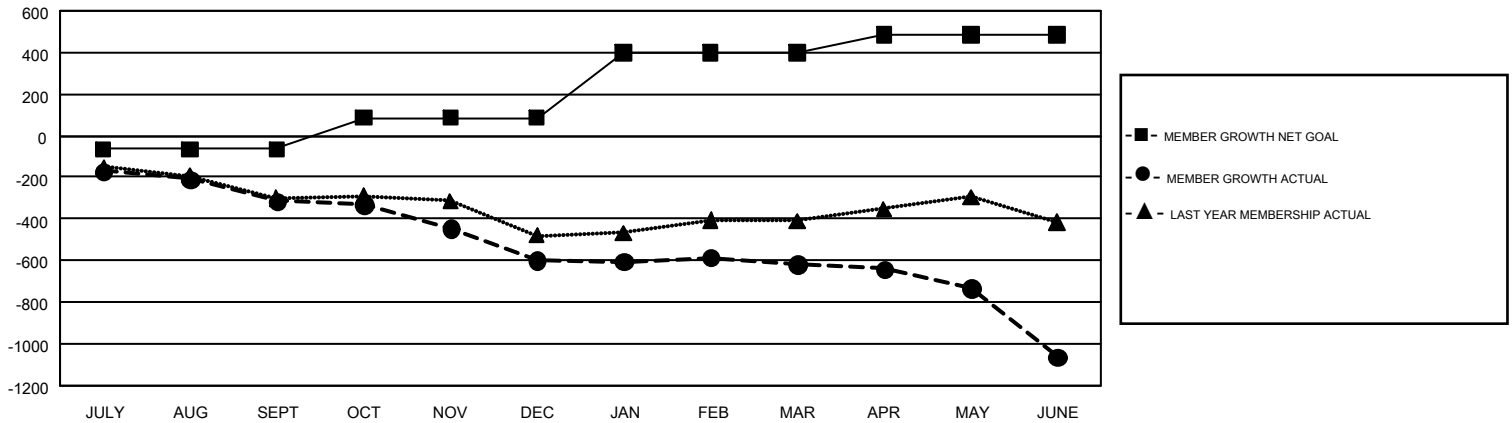
REPORT DOES NOT INCLUDE CLUBS IN UNDISTRICTED AREAS.

Clubs				Members			
RESULTS FOR 2017-2018				RESULTS FOR 2017-2018			
QUARTER	NEW CLUB GOAL	NEW CLUBS	DROPPED CLUBS	QUARTER	MEMBER GROWTH NET GOAL	MEMBER GROWTH ACTUAL	DROPPED MEMBERS ACTUAL (including transfers)
JULY/AUG/SEPT	1	0	5	JULY/AUG/SEPT	-65	306	566
OCT/NOV/DEC	3	0	3	OCT/NOV/DEC	152	417	643
JAN/FEB/MAR	7	2	4	JAN/FEB/MAR	311	488	452
APR/MAY/JUNE	3	1	11	APR/MAY/JUNE	86	574	963

GOALS AND ACTUAL NEW CLUBS CUMULATIVE



GOALS AND ACTUAL MEMBERS CUMULATIVE



DROPPED CLUBS: 23	442 CLUBS OF 700 ADDED 1 OR MORE NEW MEMBERS	<u>GENDER DISTRIBUTION</u>
<u>DROPPED MEMBERS</u>	CLICK HERE FOR CUMULATIVE MEMBERSHIP DATA	MALE 10,775 (67.64%)
DECEASED 244		FEMALE 5,155 (32.36%)
CLUB CANCELLED 169		TOTAL FAMILY UNIT MEMBERS 0
OTHER 2,210		FAMILY MEMBERS PAYING HALF DUES 0
TOTAL 2,623		